

Contact us

(877) 826-1177

office@cnilocates.com

<https://www.cnilocates.com>

PO Box 7740, Bonney
Lake, WA, 98391

Locations

Everett (Dispatch Point)

(425)407-9400

Renton (Dispatch Point)

(425)407-9399

Seattle (Dispatch Point)

(206)681-0034

Tacoma (Dispatch Point)

(253)831-6350

Portland (Dispatch Point)

(971)312-6745

Eugene (Dispatch Point)

(541)650-9324

<https://www.cnilocates.com/schedule-work/>

<https://www.cnilocates.com/request-an-estimate/>



CNI Locates Ltd. is Oregon and Washington State's leader in subsurface damage prevention. Our expert team specializes in an array of services including Metallic Line Detection, Non-Metallic Line Detection, Leak Detection, Ground Penetrating Radar, Structural & Concrete Imaging, Electrical Fault Detection, Video Push Camera Inspections, Sewer Crawler Inspections, Design Survey Locating, Magnetic Detection, Utility Mapping, Aerial Drone Imagery, Plastic Water Pipe Detection, Public and Private Utility Locates, and more. When requesting public locates, be aware that privately owned utilities account for more than 50 percent of the utilities on most commercial and residential properties; these private utilities are not field marked by the public locating services. In the United States there is a utility strike every 1-2 minutes caused when underground utilities are not marked before digging, that's why it is important to call 811 and CNI Locates before performing subsurface work. Communication is vital between our technicians and clients on projects (big or small) and plays an essential role in Damage Prevention. CNI Locates has maintained a 99.99% success rate performing accurate locates without causing any subsurface damages. Please don't hesitate to contact us for scheduling and rate information.

Services

- Aerial Drone Imagery
- Design Survey Locating
- Electrical Fault Detection
- Ground Penetrating Radar
- Leak Detection
- Magnetic Detection
- Metallic Line Detection
- Non-Metallic Line Detection
- Plastic Water Pipe Detection
- Public and Private Utility Locates
- Sewer Crawler Inspections
- Structural & Concrete Imaging
- Utility Mapping
- Video Push Camera Inspections

<https://www.cnilocates.com/services/>



Table Of Contents

Page 1: Introduction
Page 2: Table of Contents
Page 3: Proven History
Page 4: Safety/ Training
Page 5: Project Cycle Solutions
Page 6: Public and Private Utility Locating
Page 7: Ground Penetrating Radar
Page 8: Concrete & Structural Scanning
Page 9: Metallic Line Detection
Page 10: Non-Metallic Line Detection
Page 11: Video Camera Pipe Inspections
Page 12: Leak Detection
Page 13: Electrical Fault Detection
Page 14: Plastic Water Locates
Page 15: Utility Mapping
Page 16: Aerial Drone Imagery
Page 17: Magnetic Detection
Page 18: Join Us

Pacific Northwest Company

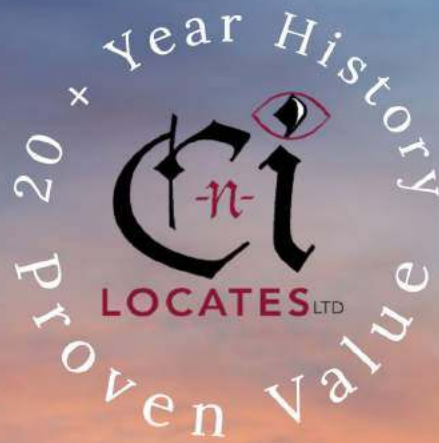
Oregon and Washington
States Leader in
Subsurface Damage
Prevention

20 + Technicians
Serving all of Oregon
and Washington State

Nearly 80% of our
business is a repeat
customer or a
referred customer

99.99 % Customer
Satisfaction

Guaranteed 24
Hour Site Response



Family Owned

25 + Staff Members
Ready to Answer Any
Questions You Have.

Free Estimates
(Please provide a detailed
description of the service
(s) needed and a site map
outlining the work area)

Proven Results
CNI Locates has completed
over 200,000 projects with
a 99.99% accuracy rating
since our origination in
2001

Every CNI Locates
Technician is equipped
with state of the
art equipment.

- 3 Month
Standard Training

MUST BE WORN

- Average of 10,000+
hours of experience
per technician



**Hard
Hat**



**Safety
Boots**



**Safety
Vest**



**Safety
Glasses**

- 99.99 % Subsurface
Damage Prevention

- 99.99 % Accuracy

- Extraordinary
Communication

- 2022 EMR Rating
0.79

SAFETY & DAMAGE PREVENTION

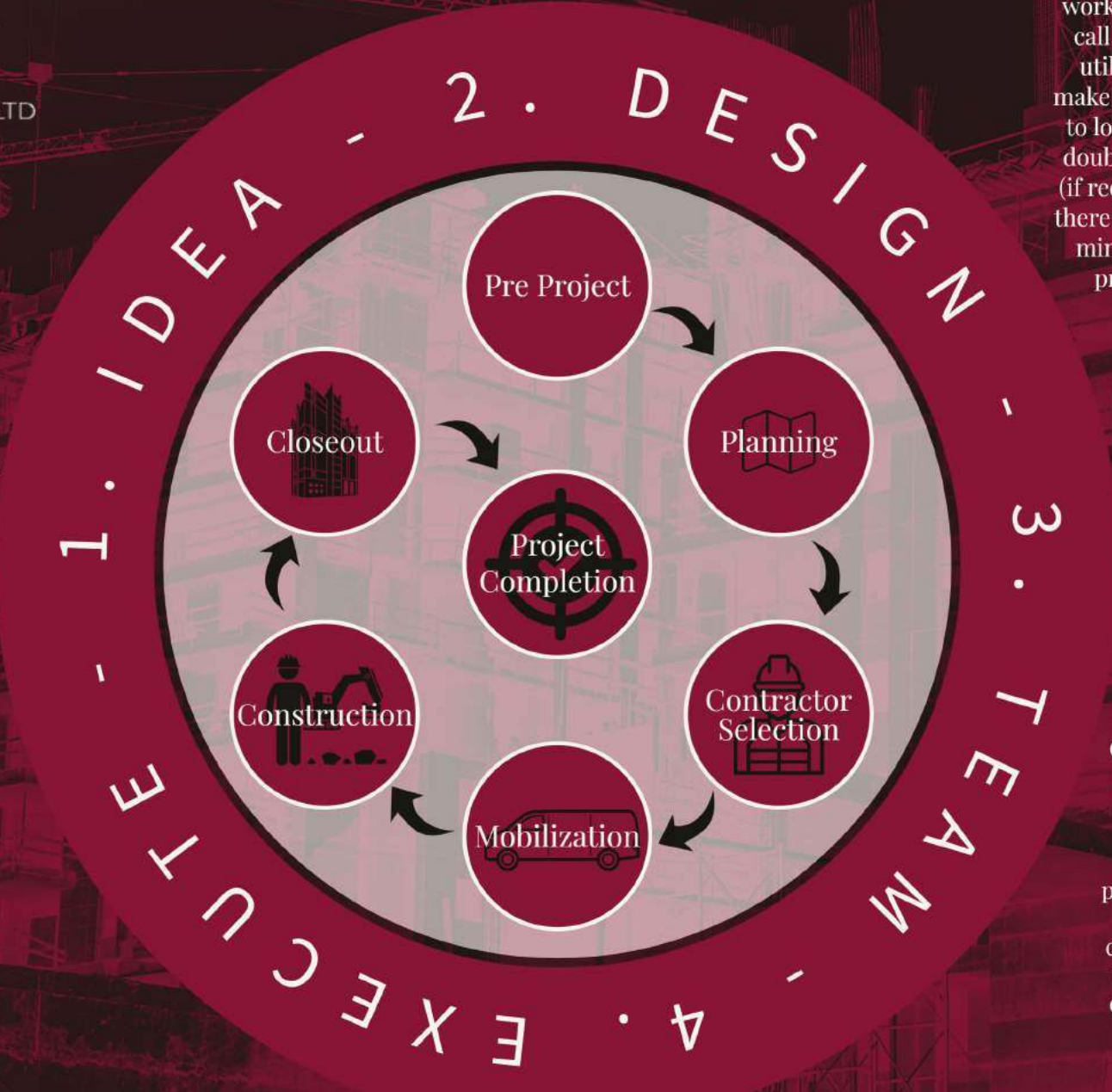




LOCATES LTD

Project Cycle

Design Planning
 We can provide information on underground utilities, known and unknown, and map your entire facility above and below ground before you start work. CNI Locates helps you visualize your project through utility locating, ground penetrating radar, concrete scanning, leak detection, plastic water pipe detection, electrical fault detection, video camera inspections, non-metallic line detection, utility mapping, and aerial drone imagery.



Construction

Prior to performing any preliminary design or subsurface work, it's vital to develop a plan for the underground utilities in your work area. We suggest our clients call 811 first to verify any public utilities in the work area, then make CNI Locates their second call to locate any private utilities and double check public utility marks (if requested). In the United States there is an utility damage every 1-2 minutes. CNI Locates goal is to prevent 100% of subsurface damages.

Budget

Let CNI Locates help meet your budget. We provide free estimates and provide multiple services that will fit into your budget (that way, you only pay for the select service(s) you require).

O&M/Remodel

Construction and renovations typically require subsurface excavations. CNI Locates is professionally equipped to perform one-call locates for public and private utilities. As a project progresses, we can continue to provide support as we keep detailed information on every project we complete.

PUBLIC AND PRIVATE UTILITY LOCATES



The Utility Notification Center (811) is responsible for marking all publicly owned utilities but will not typically mark depths, privately owned utilities, or design survey requests (sent to 811). CNI Locates has the ability to designate the location of public and private utilities with the latest underground utility locating technology. To receive a comprehensive/complete locate, a private utility locating firm must be utilized to ensure that all buried utilities are located. This service allows contractors, engineers, property management companies, and anyone else to develop or update as-built drawings. Clients use these files for preplanning, to avoid utilities, or to document the history of their site on various CAD and GIS systems.



Rapid 24 Hour Site Response



Private Property Locates



Facility Mapping



One-Call Utility Locates



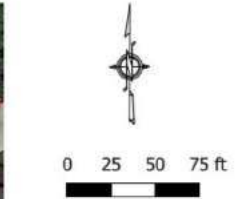
Drilling & Boring Clearance



Pre-Design Survey Locates

CNI Locates Ltd. is a turnkey service provider always responsive to our needs at the drop of a hat. Their qualified personnel always meet or exceed expectations, helping to not only limit our liabilities but increase our profit margins as well. Would I use them again? Absolutely! It's refreshing to work with a company who is quick to respond, willing to do anything to help me on very short notice and who are very knowledgeable.

- Tina Coleman



- Utility Points
- Drainage Storm Drain
 - ◆ Electrical Meter
 - ◆ Receptacle
 - Light Pole
 - ▲ Electrical Transformer
 - Electrical Vault/Enclosure
 - GPR Depth
 - Irrigation Other Point
 - Irrigation Valve
 - Telecom Other Point
 - Telecom Vault/Enclosure
 - ▲ Water Hydrant
 - Water Valve

- Utility Lines
- Drainage Pipe
 - Electrical Cable
 - GPR Line
 - Irrigation Line
 - Telecom Cable
 - Water Pipe

Winery
August 7th, 2022
Drawn By - DK

NOTES: WE ASSUME NO RESPONSIBILITY OR LIABILITY OF ANY KIND TO ANY USER OF THIS MAP. LOCATIONS ON THIS MAP ARE APPROXIMATE AND ARE INTENDED TO SERVE AS AN AID IN GRAPHIC REPRESENTATION ONLY. BEFORE EXCAVATION CALL 811 AND A PRIVATE UTILITY LOCATOR TO SCHEDULE FIELD LOCATIONS OF UTILITIES. PLEASE REPORT ANY ERRORS OR OMISSIONS ON THIS MAP TO THE UTILITY OWNER AND FACILITY OWNER



GROUND PENETRATING RADAR



Rapid 24 Hour Site Response



Depth Assessments Available



Underground Storage Tank Detection



Underground Void Detection



Unmarked/Marked Grave Detection



Duct Bank/ Plastic Conduit Detection



State Of The Art Equipment



Locates Unknown Subsurface Structures and Utilities



Ground Penetrating Radar is a non-destructive geophysical device used for subsurface exploration and operates by transmitting an electromagnetic pulse from an antenna into the ground and then capturing the partial reflections from subsurface layers. Any material with a different dielectric constant will either speed up or slow down the signal creating a hyperbolic trail. This is similar to a rock in a creek, the water bends around the rock leaving a tail wake.

GPR scans for dielectrics under the surface. The dielectric constant is critically important to getting accurate depth readings with GPR systems. Dielectric constants, also known as relative dielectric permittivity, are measured on a scale of 1 to 81, where 1 is the dielectric constant for air (through which radar waves travel most quickly) and 81 the constant for water (through which radar waves travel most slowly). Metallic objects exist outside the scale, since radar waves cannot penetrate them at all; they are described as having an infinite dielectric constant.

GPR is a key piece of technology we use to provide detailed and accurate locates. GPR can scan for metallic and nonmetallic materials under the surface and provide depth assessments. It can also help find voids, underground storage tanks, septic systems, duct banks, grave sites, etc.

GPR has no health hazards and provides instant data.

CONCRETE & STRUCTURAL SCANNING



Rapid 24 Hour Site Response

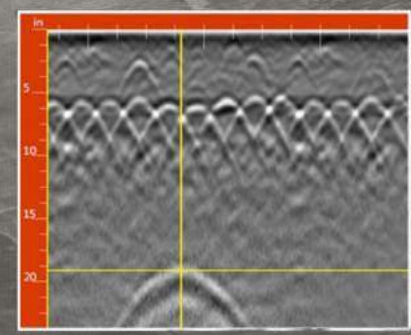
Depth Assessments Available
Structural Analysis

Concrete Drilling Applications

Concrete Anchoring Applications

Saw Cutting Applications

Concrete Coring Applications



Because concrete drilling, anchoring, coring, cutting, & demolition comes with risks, CNI Locates technicians are equipped with all the necessary technology to clear your work areas. So you can feel safe knowing that your work area has been properly marked, before performing any work. Our concrete & structural scanning services can be completed on any surface, including but not limited to concrete slabs, walls, columns, beams, and foundations. When our technicians are finished with the scanning process, you will have a clear layout of vital targets such as post-tension cables, rebar, beams, conduits, voids, etc.



METALLIC LINE DETECTION

Metallic Line Detection is the

Identification of metallic underground utilities with electrical continuity: Utilizing electromagnetic transmitters and receivers to locate conductive utilities like Phone, Gas, Cable/TV, Water, Irrigation, Lighting, Electrical, Etc...

There are 2 different methods when utilizing metallic line detection.

1. Active Methods

An active signal is a signal that has been artificially generated by an external source. Active electromagnetic radio detection methods can allow different utilities to be individually identified.

Active methods involve the use of a transmitter.

The transmitter can either be used with direct connection, an induction clamp, or for induction.

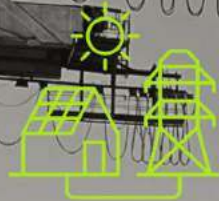
It is often possible to determine a depth assessment of the utilities in these modes.

2. Passive Methods

A passive signal is a signal that occurs 'naturally' on a buried conductor. Passive radio detection methods will provide an indication only that services are present underground. Passive methods use the electro-magnetic fields already present around the underground utility to locate them.



One-Call
Utility
Locates



Private
Property
Locates



Rapid 24
Hour Site
Response



Depth Assessments
Available
(Upon Request)



Commercial
Property
Locates



Design
Survey
Locates



NON-METALLIC LINE DETECTION



Rapid 24 Hour Site
Response



Depth Assessments Available
(Upon Request)



Broken Conduit
Detection Applications




Sewer & Drainage
Detection Applications



Plastic Water
Detection Applications



Duct Bank/Empty Conduit
Detection Applications



In order to locate any non-metallic utilities, we will need an access point to insert something metal like a fish tape, plumbers snake, flex rod, or flexi trace into the line. For sewers we will need access to a clean out, manhole, removed toilet, stub, etc. to insert the line (We can only insert as far as the rod allows us to push and there may be blockages, along with T's and or hard 90's in the line that prevent us from pushing any further). For drains we will need access to a clean out, catch basin, manhole, roof drain connections, stubs, etc. to insert the line. Plastic water services will need to be exposed after the meter or well head with the water shut off in order to insert the line. I recommend that the client buys a brand-new fish tape for any water service insertions. You don't want to use a used fish tape, because you don't want to get any contaminants or bacteria into the water system.

VIDEO CAMERA INSPECTION SERVICES

Push Camera Inspections

Push Video Camera Pipe Inspections, for pipes 1.5"-12" and up to 400 feet in length. Accomplished by introducing "Closed Circuit Television" (CCTV) video push cameras with electronic beacons through 1.5"-12" pipes to locate, inspect and video record their condition.

Crawler CCTV Inspections

Crawler CCTV Video Pipe Inspections for pipes 4"-48" and up to 1,000 feet in length. Accomplished by introducing a "Closed Circuit Television" (CCTV) robotic crawler to locate, inspect and video record their condition. The crawler, walking in the pipe, records high definition inspection video and stores it onto the control unit. When a defect in the pipe is identified, we can type text onto the screen and the default information is overlaid on the video. The real time information of the crawler status can be displayed by adjusting the functional buttons, including pitch angle, pressure, distance, date and time etc.

Video/Data Recording

Rapid 24 Hour Site Response
(Crawler May Take Additional Time)

Broken Pipe Detection Applications

Sewer and Drainage Inspection Applications

Depth Assessments Available (Upon Request)

Duct Bank and Empty Conduit Inspection Applications

Pipe Condition/Blockage Detection Applications



LEAK DETECTION



CNI Locates specializes in all types of leak detection, including but not limited to municipal, industrial, and residential properties. Our water loss experts have state of the art equipment to locate your leak and the knowledge to provide many other details about your water distribution system.



“ I want to express my gratitude and satisfaction for a job well done! I called your company in a quandary about how to get a leak in my meter-to-building waterline repaired. I was kindly greeted on the telephone by Larry, who went well out of his way to find the service I needed. He made a number of calls on my behalf and promptly called me back to keep me informed. The on-site locating work was performed by Tim, who was very gracious and supportive and provided insights from his experience that proved very helpful in solving my problem. I am very satisfied and grateful for the assistance and service provided by your company and it's employees. ”
- Beverly J. Kimrey

- 
Water Service Leak Detection
- 
Water Main Leak Detection
- 
Pool & Spa Leak Detection
- 
Well & Tank Leak Detection
- 
Acoustical Leak Detection
- 
Rapid 24 Hour Site Response

ELECTRICAL FAULT DETECTION



CNI came out promptly and accurately found the broken underground wire. The locator worker was knowledgeable, polite, and professional. He showed me how the locator worked, which was helpful and nice of him. The price was okay for the trouble it saved us. I am so happy I called them. I would hire them again and highly recommend their services.

-Joann Nelson



Rapid 24
Hour Site
Response



Depth
Assessments
Available



Fault &
Broken Wire
Detection



Precise
Locations
& Depth
Assessments

Buried cables do occasionally fail, for a variety of reasons and in many different ways. Lightning strikes, overloads or surges, installation problems, shovel and rodent damage are some of the common causes of damage that can lead to cable failure. Any discontinuity in the cable jacket which allows moisture in overtime corrodes the conductors. Cables fail either open circuit, short circuit or somewhere in between, to earth and/or to another conductor in the cable. The type of fault should be determined as different faults require different approaches. A persistent fault to earth (a ground fault) is usually most accurately and most easily found with an A-frame. Open and short circuits are best found with a TDR, and a 'flashing' fault that only happens at high voltages usually requires a high voltage surge generator or 'thumper'. Most transmitters in a fault finding system will have some way to indicate if there is a path to ground such as an ammeter or ohmmeter and some have both. If there is a path to earth, the A-frame is still one of the most popular and most recommended methods when the conductor is not enclosed in duct.



LOCATES^{LTD}

Rapid

24

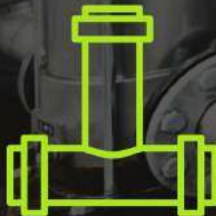
Hour

Response

Well Line
Detection
Applications

Water
Service
Detection
Applications

Water Main
Detection
Applications



ACOUSTIC PLASTIC WATER PIPE DETECTION

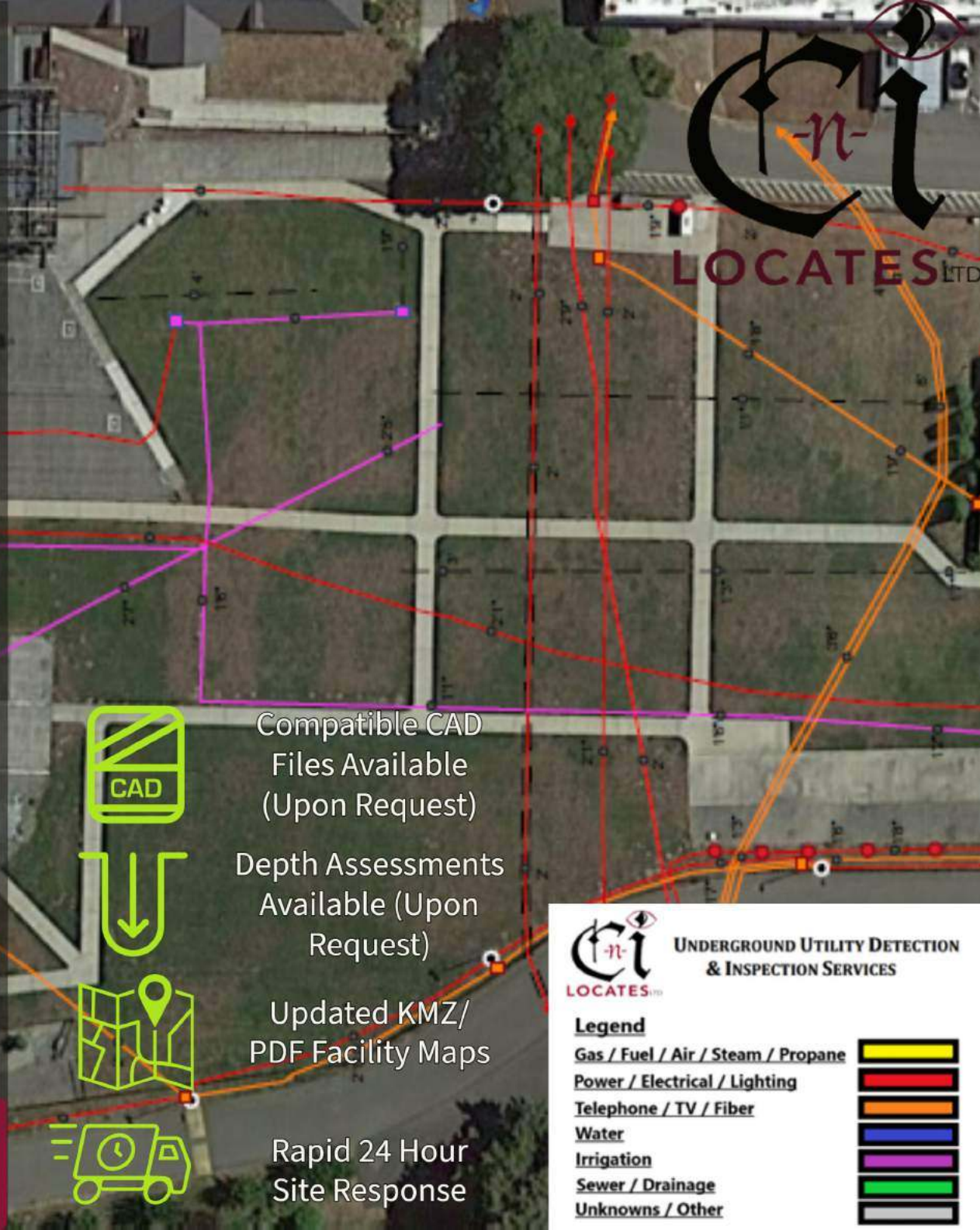
Typically, any home built after 1969 will have a plastic water service. Plastic water pipes (pvc, pex, poly, etc.) are not electromagnetically locatable with standard locating equipment. CNI Locates uses electronic pulse transmitters to send a gentle (safe) water pulse through your service, so we can acoustically listen for that service with our amplified listening devices. We can typically locate plastic services under 2 inches between 100-150ft depending on multiple variables (size of pipe, depth of pipe, soil condition, amount of t's, elbows, and angles, etc.). We are not typically able to hear any 2 inch or smaller service lines over 4 feet deep. If the service is over 2 inches we can typically locate up 400-500 ft. depending on multiple variables (size of pipe, depth of pipe, soil condition, amount of t's, elbows, and angles, etc.). We are typically able to hear any 2 inch or larger lines up to 6-8ft deep (depending on multiple variables). When the service is undetectable with our plastic pipe locator and ground penetrating radar, the water line must be inserted with a brand-new steel fish tape (to avoid putting bacteria into the line). Once the steel fish tape has been inserted into the water line, we can guarantee the location of our locates by sending an electromagnetic signal through the "metal" fish tape.

If you have a leak on a plastic water service, a plastic water locator is vital to finding the location of the leak. Typically, any home built before 1969 will have a galvanized service that is electromagnetically locatable. If the service is locatable, we will have a 99 percent success rate of finding the leak, since we will be able to mark the exact location and approximate depth of the service.

UTILITY MAPPING



Locating underground utilities is difficult without accurate and detailed documentation. While some public utility maps are available upon request, private utilities remain unknown unless a private locator is called. CNI Locates Underground Utility Detection and Inspection Services locates utilities, marks their location, and has the ability to collect GPS coordinates of those utilities. We can provide high-resolution maps in the form of PDF, KMZ, and SHP files with every outdoor utility locating project we perform. These maps are essential for keeping an accurate record of the utility's locations for future work.



Compatible CAD Files Available (Upon Request)



Depth Assessments Available (Upon Request)



Updated KMZ/PDF Facility Maps



Rapid 24 Hour Site Response



Legend	
Gas / Fuel / Air / Steam / Propane	
Power / Electrical / Lighting	
Telephone / TV / Fiber	
Water	
Irrigation	
Sewer / Drainage	
Unknowns / Other	

AERIAL DRONE IMAGERY



CNI Locates has licensed drone pilots that provide aerial imagery for your project site as an additional service. Our drones allow us to create high-quality aerial images showing our paint and markers on the ground and the on-site conditions at the time of flight. The drones can fly in and record immediately after we finish marking the field. We can use these recordings to overlay images onto google earth images for utility mapping, so our clients have an updated photo of their project.

Clients will be able to view, inspect, and map their project area by incorporating drone services. When we give clients their deliverable, they will receive an up to date/real time view of the project site, eliminating the need to rely on obsolete maps or satellite imagery.



Rapid 24 Hour
Site Response



Updated Aerial Imagery
Facility Maps Available
(Upon Request)



Real Time Video Of
The Work Area

MAGNETIC DETECTION

Magnetic Locators will ONLY locate metal objects that are made of ferrous material. Basically speaking, if a magnet will stick to it, a Magnetic Locator will detect it. Understanding that how deep in the ground you can detect something depends on its mass.

A surveying nail can be found up to about 2' - 3' feet. The larger the object is, the deeper we can find it. Magnetic Locators will not detect objects such as electrical power cables made of aluminum or copper, since these materials are not considered ferrous. Items that are found using Magnetic Locators are usually cast iron pipes, property corner markers, steel enclosures or hardware, hazmat drums, mag and pk nails, manhole covers, marker magnets, septic tank lids, unexploded ordnance, valve boxes, weapons, and well casings.



Rapid 24 Hour Response



Applications for Finding Buried Metallic Objects.



JOIN US

CNI Locates Ltd. is Oregon and Washington State's leader in subsurface damage prevention. Our expert team specializes in an array of services including Metallic Line Detection, Non-Metallic Line Detection, Leak Detection, Ground Penetrating Radar, Structural & Concrete Imaging, Electrical Fault Detection, Video Push Camera Inspections, Sewer Crawler Inspections, Design Survey Locating, Magnetic Detection, Utility Mapping, Aerial Drone Imagery, Plastic Water Pipe Detection, Public and Private Utility Locates, and more. When requesting public locates, be aware that privately owned utilities account for more than 50 percent of the utilities on most commercial and residential properties; these private utilities are not field marked by the public locating services. In the United States there is a utility strike every 1-2 minutes caused when underground utilities are not marked before digging, that's why it is important to call 811 and CNI Locates before performing subsurface work. Communication is vital between our technicians and clients on projects (big or small) and plays an essential role in Damage Prevention. CNI Locates has maintained a 99.99% success rate performing accurate locates without causing any subsurface damages. Please don't hesitate to contact us for scheduling and rate information.



4 Hour Donation
For Any Churches
First Service
(Standard Rates)



Rapid 24
Hour Site
Response



CNI Locates is a safe and thorough service provider that understands the client's perspective and is responsive to the intricate balance between doing their jobs well and exceeding expectations. Their staff always communicate schedule and call for clarification when needed or unexpected situations arrive. Top Notch Service at reasonable rates!

- Mitch Evans



I have been working with this company for around three years. During my time with this company I have really come to love the levels of professionalism and dedication that is present at every level from field techs, to management, all the way up the chain right to the ownership. Having worked in many fields in my life, I have never seen the level of cooperative involvement that is now present now within my daily life. Everyone is here to make sure that everyone else succeeds. My opinions and ideas matter to the management staff. All of my scheduling needs have been met giving me an excellent work/life balance. All of my teammates exude amazing levels of professionalism and expertise. Working here makes it easy to come in to work, instead of dreading another work day. The work itself is never dull or monotonous, as every day brings a new puzzle to uncover and a new challenge to overcome. I say this with all honesty, this is the greatest opportunity that I have ever found within my field. I am both thankful and grateful for every chance offered to me as I have excelled within my position here with the company. Thank you CNI. Every single one of you guys and gals absolutely rock!! I would give you six stars if able.

- Brent T.

